

Roadworks Patrol – 10<sup>th</sup> April 2017 (9 AM ride)

Authors: Michael Barratt TfL and Francis Bernstein Southwark Cyclists



### Attendees

Lukman Agboola	PI TfL	Howard Klassen	Tideway
Andy Cawdwell	Southwark Cyclists	Samantha Norman	PI TfL
Francis Bernstein	Southwark Cyclists	Ed Dunlop	City of London
Kin Lam	PI TfL	Edel Power	Tideway
Matt Moran	TfL		

#### Introduction

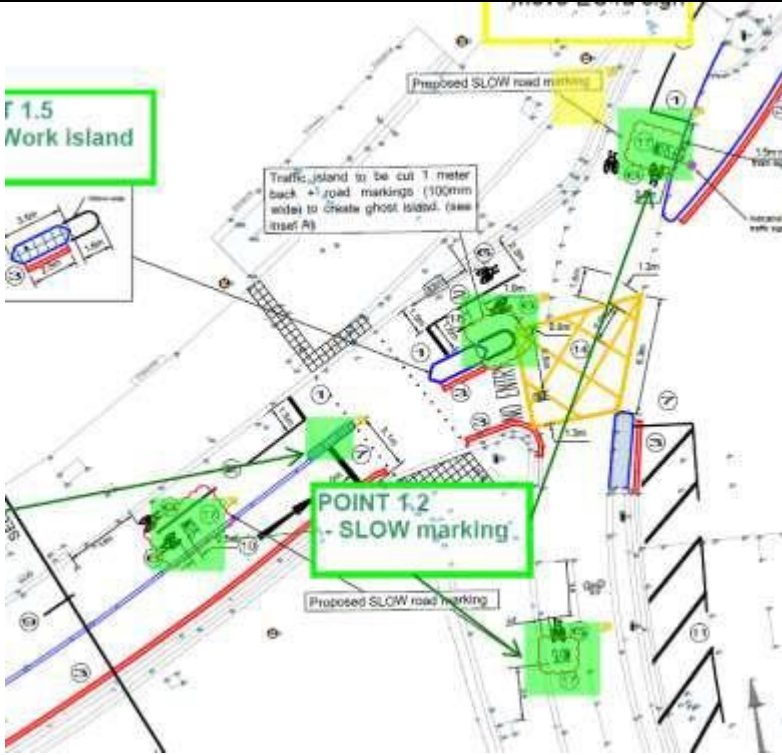



The partnership is made up of TfL, cycle and pedestrian and other stakeholder groups.

The objective of the exercise is to; on a regular basis cycle and walk through TfL and major development schemes during build and ensure where possible that the traffic management and construction management implemented does not negatively impact on vulnerable road users.



#### A focus on the Tideway Scheme

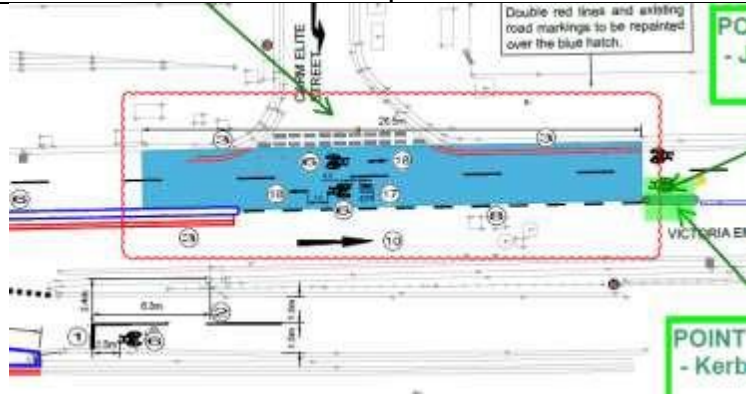
This scheme has been implemented due to the closure of the southern ramp adjacent to Blackfriars Underpass. This is to assist with facilitating Tideway works. Tideway has worked with TfL and LCC to find a solution to maintain cycling. The ride is to help identify opportunities for improvement.

<p><b>HOTSPOT 1</b> Blackfriars Bridge – Revised layout</p>	<p><b>ISSUES &amp; ACTIONS</b></p>
	<p>Review of changes</p> 
	<p>Grey kerbs have conflict potential especially night time.  <b>Potential to paint for better visibility and have white taper on approach</b></p> <p><b>MB has been in liaison with Rediweld (manufacturer) re alternative approaches.</b></p>
	<p>Pinch point on approach when large number of cyclists and PM peak.  <b>Consider improved nearside kerb alignment to increase space for waiting cyclists.</b></p>



## HOTSPOT 2

### Victoria Embankment Ramp



## ISSUES & ACTIONS



Vehicles exiting Carmelite observed over running give way markings. Issue with reduced driver visibility due to waiting pedestrians/street clutter, and, drivers approaching too fast.

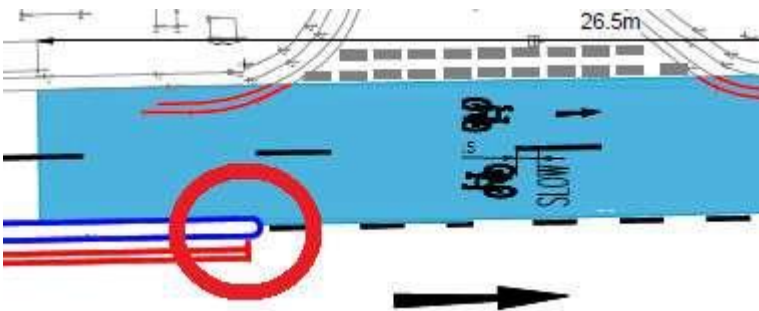


Give way line not visible in advance. Poor signage.

**Consider improving signage, and place one way repeater sign (with Except Cycles) on central kerb in front of exit. Consider Stop Line. Remove unnecessary street clutter.**

**To be monitored.**

## HOTSPOT 2



## ISSUES & ACTIONS

Strong cycle desire line off CS3 towards Whitefriars Street cycle contra-flow.

Consider cycle contra flow with demountable island on entrance on Carmelite

To be monitored.



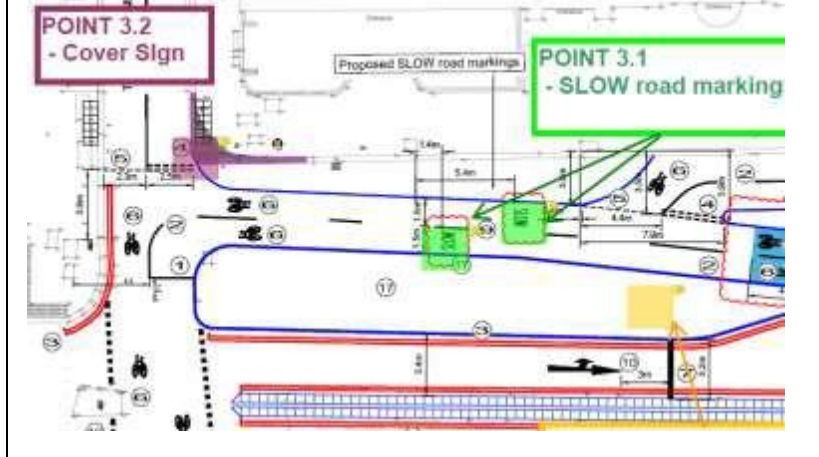
Taxi drivers seen *reversing* into street (off slip way) and others stopping to drop off passengers

Consider additional central kerb to restrict drivers turning /reversing off slip way into Carmelite (but not restricting left turning sweep out of Carmelite).

To be monitored.

**HOTSPOT 3** **ISSUES & ACTIONS**

Bottom of Ramp



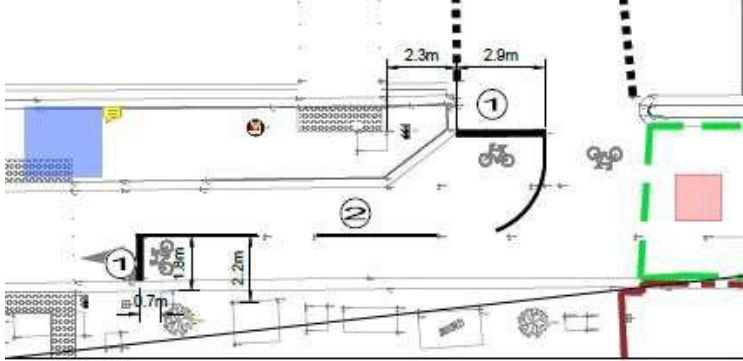

Confusing layout as cycle traffic signal cannot be seen in advance.

Tight radius on approach with oncoming cyclists.

**Consider cycle signal repeater**

Consider Trixi mirror to improve visibility.



HOTSPOT 4	ISSUES & ACTIONS
<p data-bbox="33 203 855 235">Victoria Embankment eastbound</p> 	
	<p data-bbox="855 629 1560 761">Confusing layout with cycle road signal very close to pedestrian signal over same junction, and with cycle road signal not visible on approach.</p> <p data-bbox="855 784 1560 896"><b>Investigate relocating stopline position and associated low level signal angle, or repeater signal.</b></p>