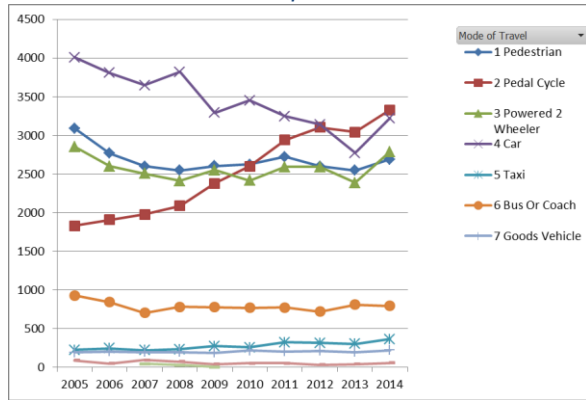


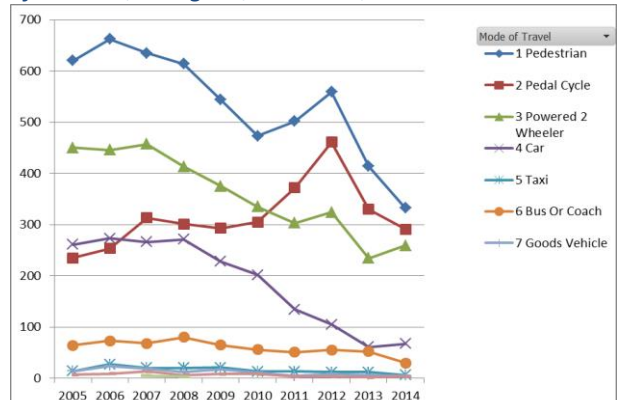
### 1/ Inner London – All casualties

*Pedal mode the highest casualties 2013 and 2014, with 9% increase to 2013.*  
*P2W mode casualties: up 17% to 2013.*



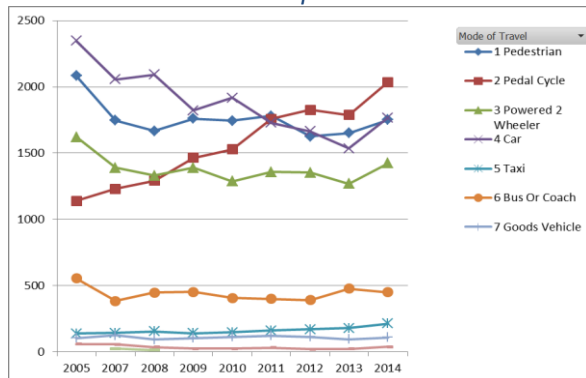
### 2/ Inner London – KSI

*KSI % casualties: Pedestrian 33%, Pedal mode 29%*  
*KSI highest to pedal mode in boroughs: Camden, City of London, Islington, Lambeth, Wandsworth\**



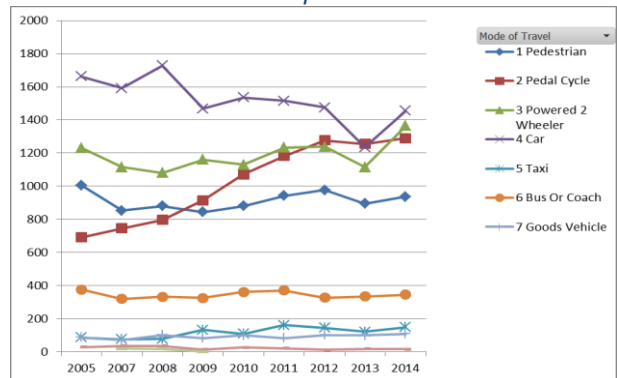
### 3/ Inner London – All casualties on Borough Highways

*Pedal mode highest casualties 2012 to 2014*  
*Pedal mode casualties: up 14% on 2013*



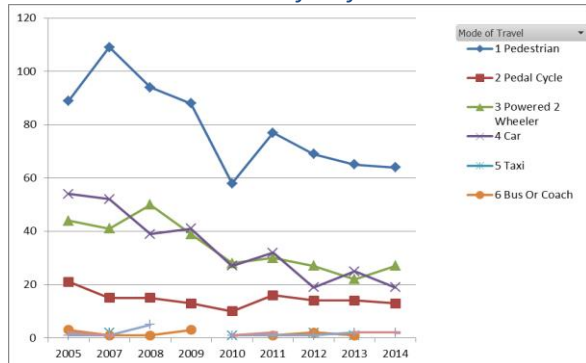
### 4/ Inner London – All casualties on TLRN Highways

*P2W casualties: up 22% on 2013*  
*Pedal mode casualties: up 3% on 2013*



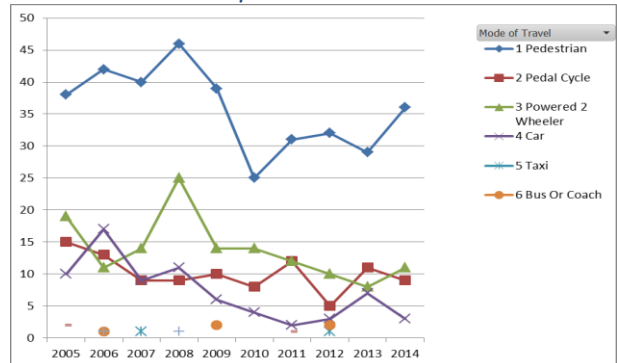
### 5/ All London – Fatalities

*Pedestrians mode 50% of all fatalities in London.*



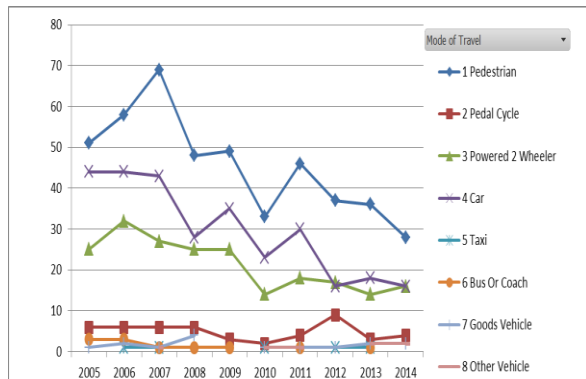
### 6/ Inner London – Fatalities

*Pedestrian mode: up 24% to 2013*



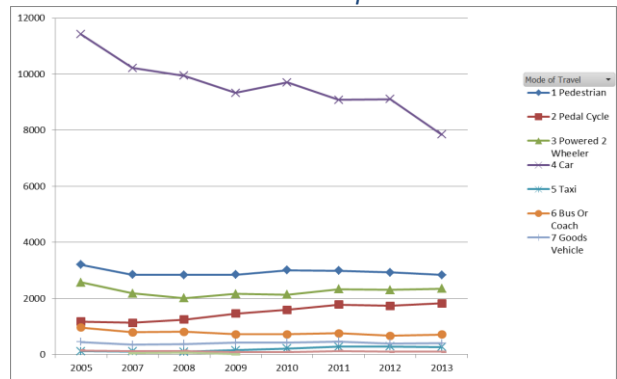
### 7/ Outer London – Fatalities

*Pedestrian mode casualties: down 22% to 2013*



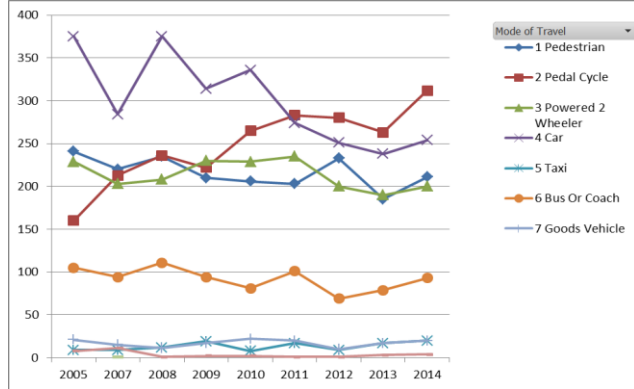
### 8/ Outer London – All casualties

*Pedal and P2W mode: both up 15% to 2013*



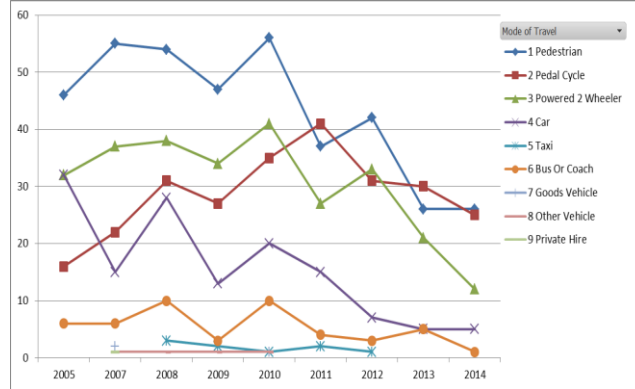
### 9/ SOUTHWARK– Total all casualties

Pedal mode the highest casualty mode 2011 to 2014  
Pedal Mode casualties: up 19% to 2013



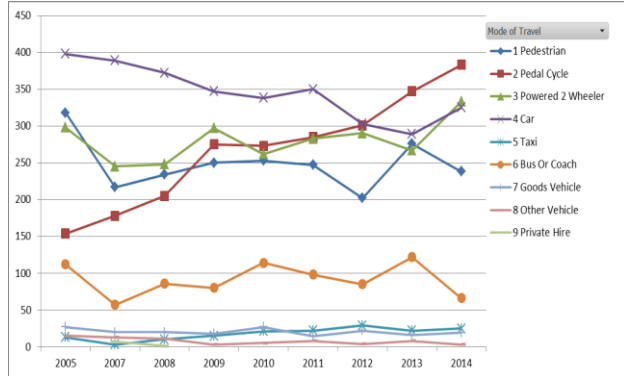
### 10/ SOUTHWARK– Total KSI

Pedestrian and Pedal mode highest casualty groups 2014



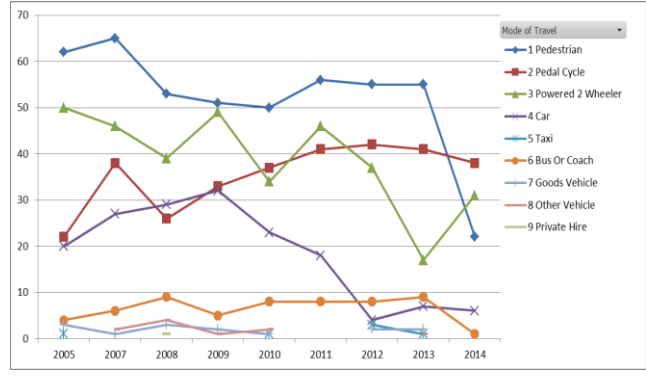
### 11/ LAMBETH – Total all casualties

Pedal mode the highest casualty mode 2013 and 2014  
P2W mode casualties: up 25% to 2013

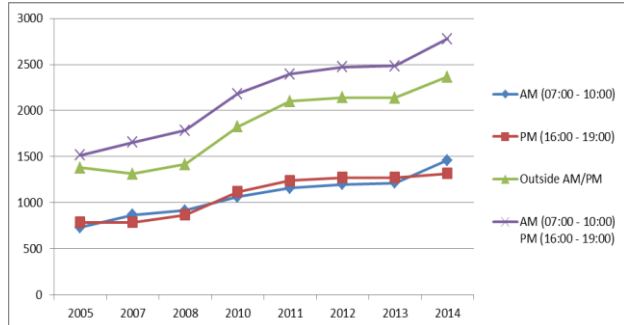


### 12/ LAMBETH– Total KSI

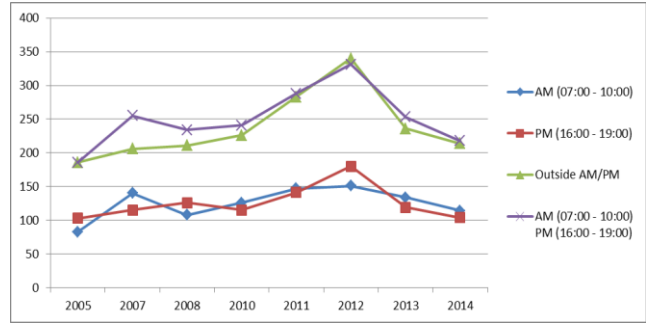
Pedal mode the highest casualty mode 2014  
Pedestrian mode casualties: down 60% to 2013



### 13/ All London –Pedal Mode all casualties by Time Zone



### 14/ All London - Pedal mode KSI casualties by Time Zone



### 15/ STATS19 2013 – All Casualties Inner London, (Sorted by Pedal Mode). Red highest casualty mode in Bor.

Bor.	1 Pedestrian	2 Pedal Cycle	3 Powered 2 Wheeler	4 Car	5 Taxi	6 Bus Or Coach	7 Goods Vehicle	8 Other Vehicle	Grand Total
WESTMINSTER	469	457	342	264	109	152	29	3	1825
LAMBETH	238	383	333	325	25	66	19	3	1392
WANDSWORTH	200	324	263	249	19	47	14	8	1124
SOUTHWARK	211	312	200	254	20	93	20	4	1114
ISLINGTON	164	274	219	190	33	70	18		968
TOWER HAMLETS	208	273	259	390	31	25	28	7	1221
HACKNEY	197	267	164	282	15	79	13	3	1020
CAMDEN	243	256	218	187	45	69	12	7	1037
HAMMERSMITH & FULHAM	154	198	201	147	13	38	9	3	763
KENSINGTON & CHELSEA	169	189	198	139	27	44	19	5	790
LEWISHAM	204	161	217	383	8	48	9	9	1039
CITY OF LONDON	114	139	78	20	9	24	5	1	390
GREENWICH	118	93	96	391	8	40	23	1	770
<b>Grand Total</b>	<b>2689</b>	<b>3326</b>	<b>2788</b>	<b>3221</b>	<b>362</b>	<b>795</b>	<b>218</b>	<b>54</b>	<b>13453</b>